

MONTHLY MEMBERSHIP PROGRESS REPORT

LOCATION INDIA

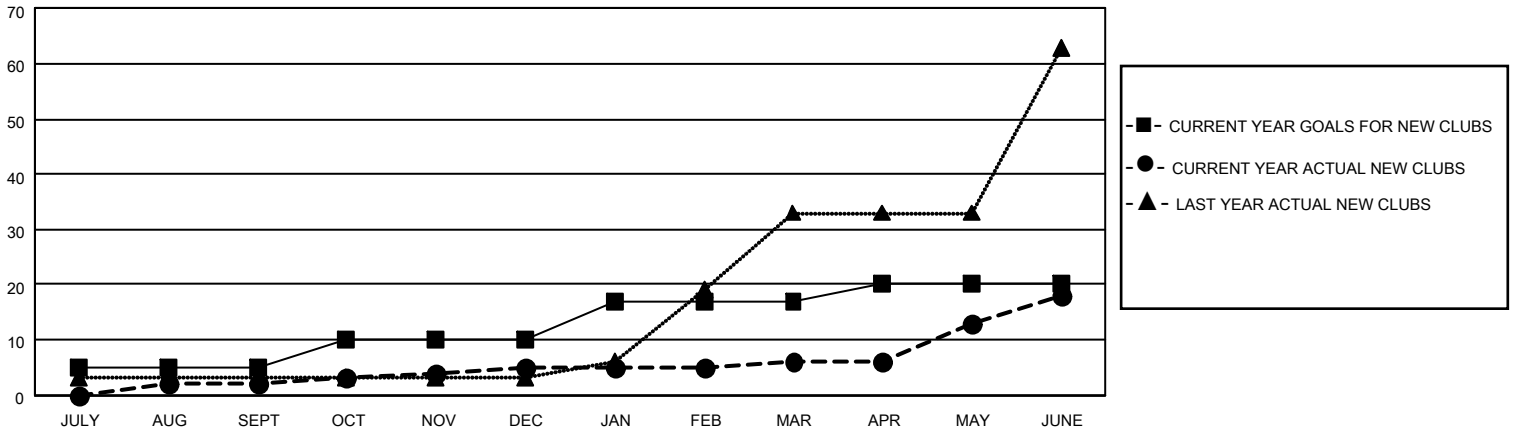
District 3233E2

Results as of: 6/30/2021

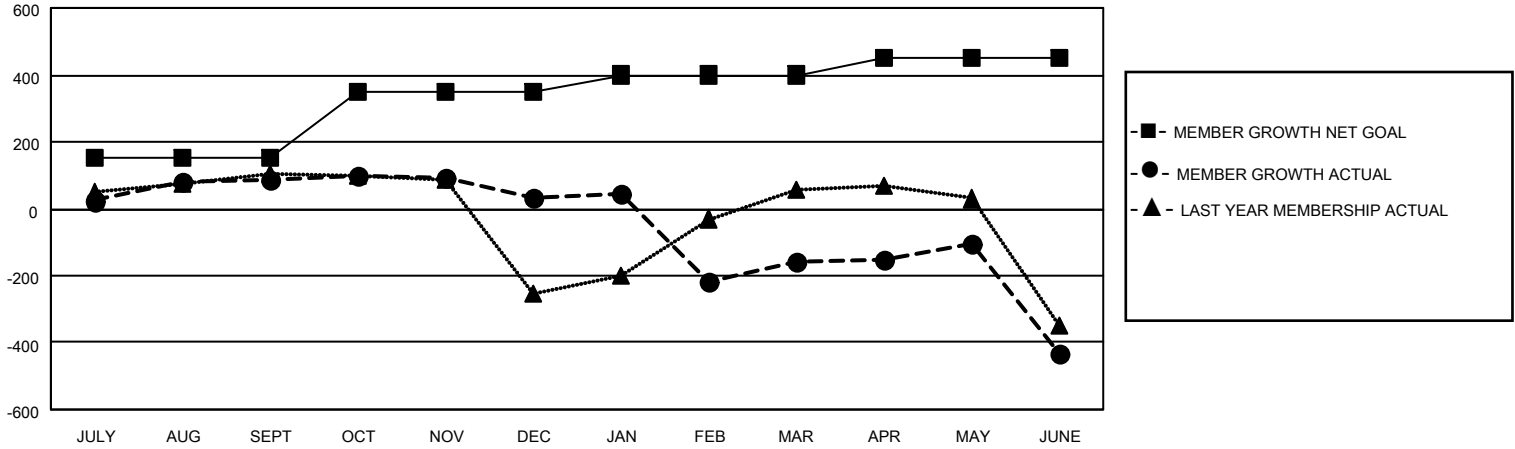
Clubs			
RESULTS FOR 2020-2021			
QUARTER	NEW CLUB GOAL	NEW CLUBS	DROPPED CLUBS
JULY/AUG/SEPT	5	2	0
OCT/NOV/DEC	5	3	0
JAN/FEB/MAR	7	1	17
APR/MAY/JUNE	3	12	0

Members			
RESULTS FOR 2020-2021			
QUARTER	MEMBER GROWTH NET GOAL	MEMBER GROWTH ACTUAL	DROPPED MEMBERS ACTUAL (including transfers)
JULY/AUG/SEPT	150	165	62
OCT/NOV/DEC	200	155	206
JAN/FEB/MAR	50	212	319
APR/MAY/JUNE	50	302	543

GOALS AND ACTUAL NEW CLUBS CUMULATIVE



GOALS AND ACTUAL MEMBERS CUMULATIVE



DROPPED CLUBS: 17

109 CLUBS OF 224 ADDED 1 OR MORE NEW MEMBERS

GENDER DISTRIBUTION

MALE 3,886 (71.07%)
FEMALE 1,582 (28.93%)

DROPPED MEMBERS

DECEASED	45
CLUB CANCELLED	260
OTHER	825
TOTAL	1,130

[CLICK HERE FOR CUMULATIVE MEMBERSHIP DATA](#)

TOTAL FAMILY UNIT MEMBERS	1,833
FAMILY MEMBERS PAYING HALF DUES	1,018